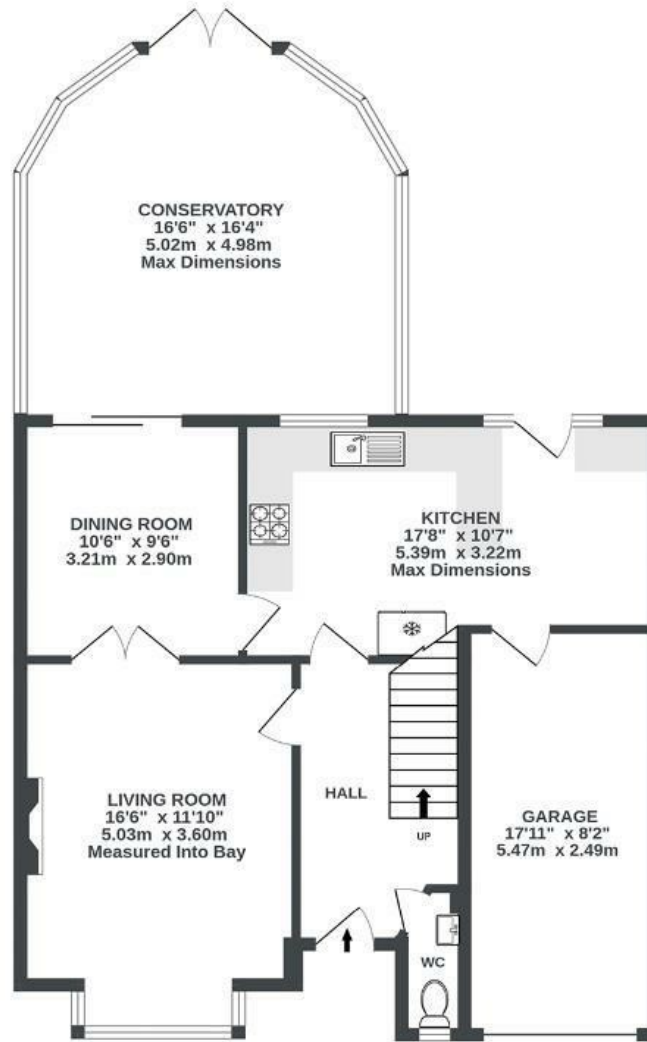


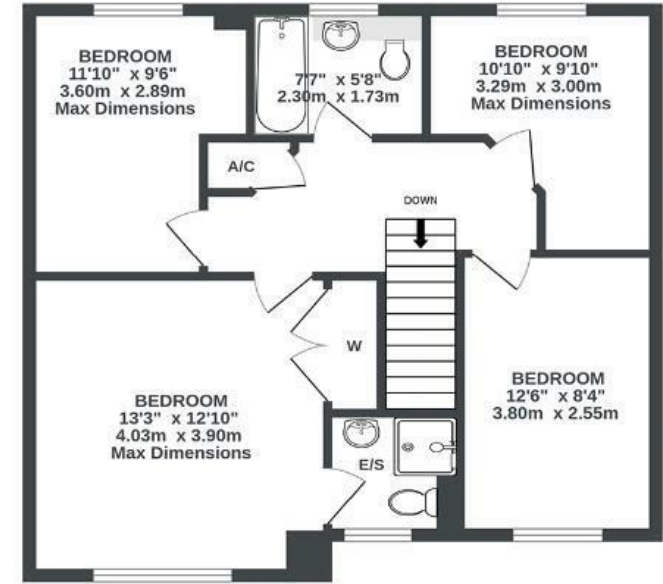
# Pinkers Mead

EMERSONS GREEN

APPROXIMATE FLOOR AREA  
148.1 SQM / 1594 SQFT



GROUND FLOOR  
952 sq.ft. (88.4 sq.m.) approx.



1ST FLOOR  
642 sq.ft. (59.6 sq.m.) approx.



Boardwalk

# Pinkers Mead

EMERSONS GREEN, BRISTOL



£500,000



4 Bedrooms



BS16 7EJ



3 Bathrooms

*"We lived in Pinkers Mead for twenty five years, bought the house from new and raised our family here. We are walking distance to Emersons Green Junior School and Mangotsfield Senior School, which was important for us when we moved in. We've loved living here and watching our family grow but now we would like to downsize as the children have left."*

